

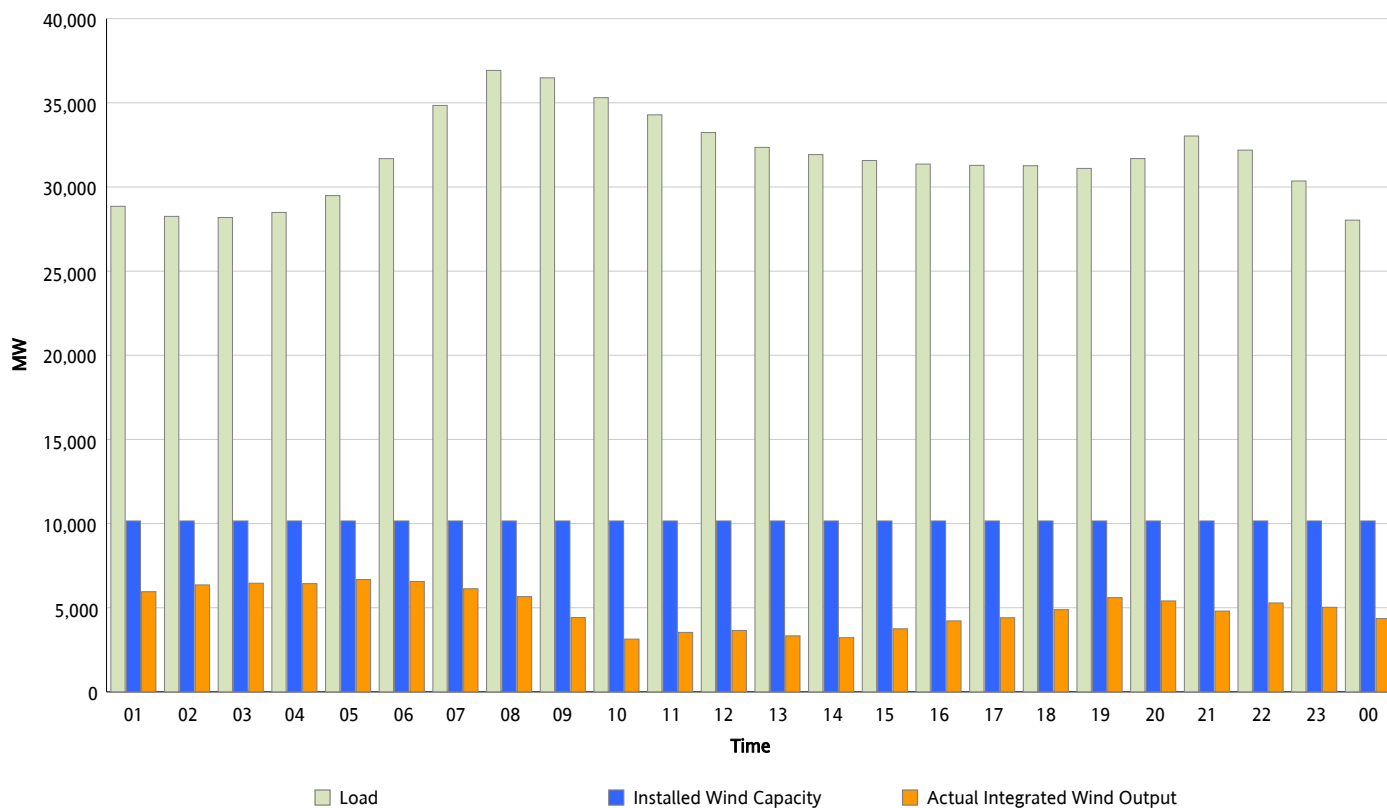


ERCOT Grid Operations

Wind Integration Report : 03/12/2013

Peak Load	36,928 MW
Load Peak Hour (HE)	08
Wind Over Peak	5,660 MW
Wind Record 02/09/13	9,481 MW
Max Wind Value*	6,753 MW
Wind Peak Time	04:16
Wind Integration %	23.13 %

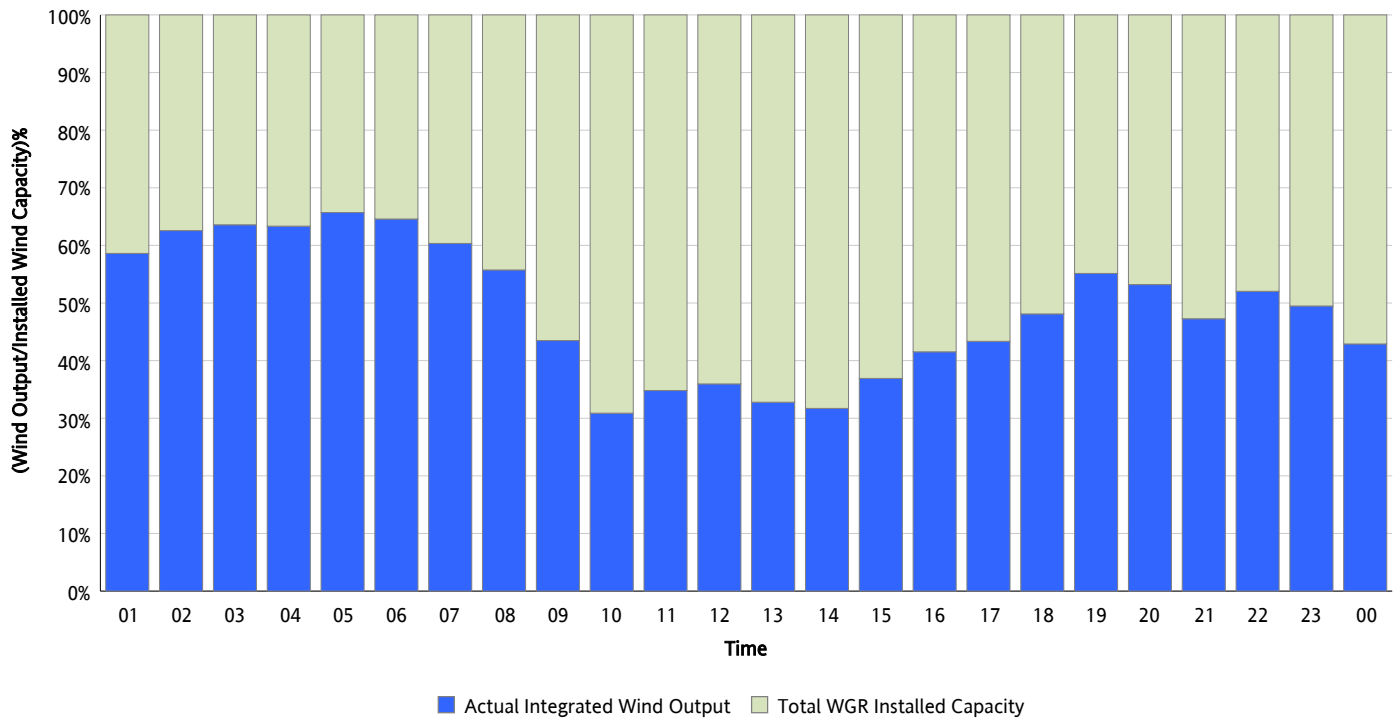
Hourly Average Actual Load vs. Actual Wind Output
03/12/2013



* Wind Record and Wind Max represent instantaneous values and the rest of the values are integrated over the hour

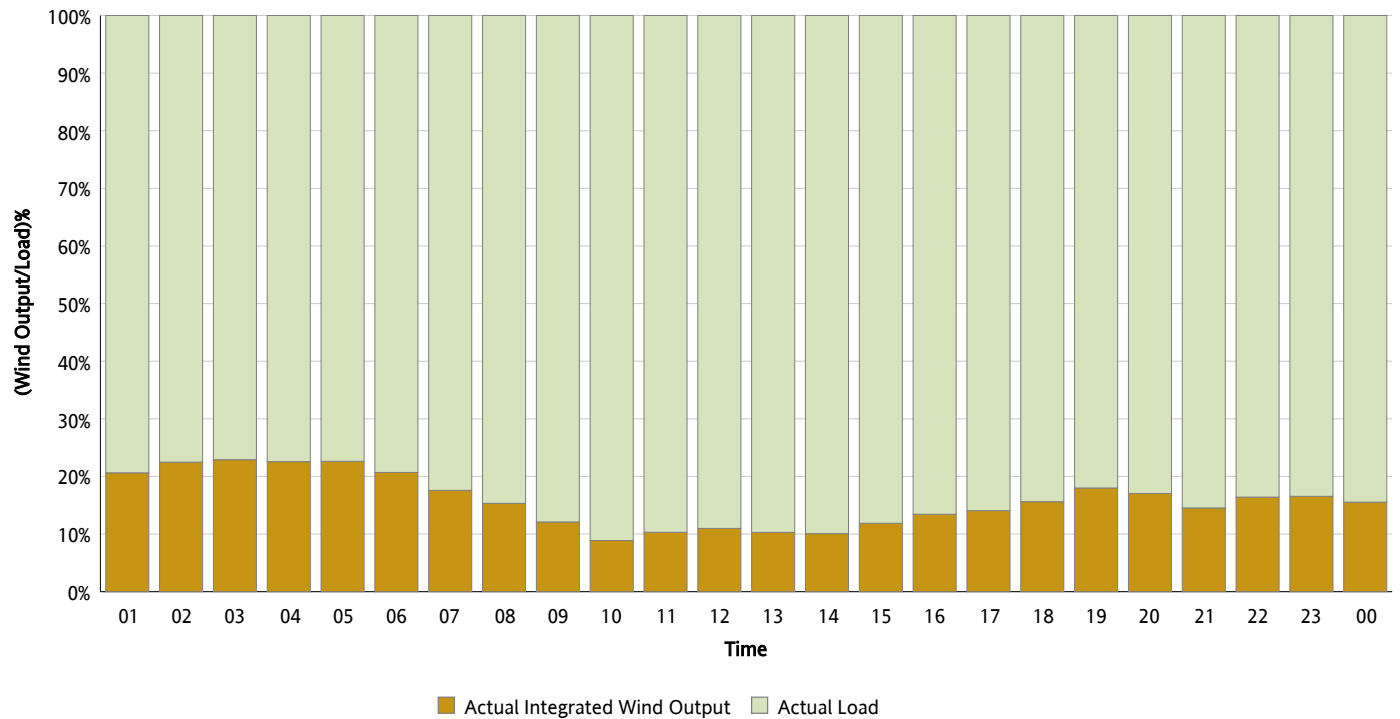
Actual Wind Output as a Percentage of the Total Installed Wind Capacity

03/12/2013



Actual Wind Output as a Percentage of the ERCOT Load

03/12/2013



ERCOT Load vs. Actual Wind Output

03/05/2013 - 03/12/2013

